



सत्यमेव जयते

REPORT OF COVID-19 CASES

Date: 12 April 2020

Time: 10:00 AM

**Analytics: Medical Education and Drugs
Department**

Data: Public Health Department

Government of Maharashtra

Table No 1: Comparison of COVID-19 Cases and Deaths

VARIABLES	WORLD	INDIA	MAHARASHTRA
TOTAL CASES	1610909	8356	1761
NEW CASES	89657	909	187
TOTAL DEATHS	99690	273	127
NEW DEATHS	6892	34	17
MORTALITY	6.19 %	3.27 %	7.21 %

Figure No. 1: Trend of Daily COVID-19 Cases in India

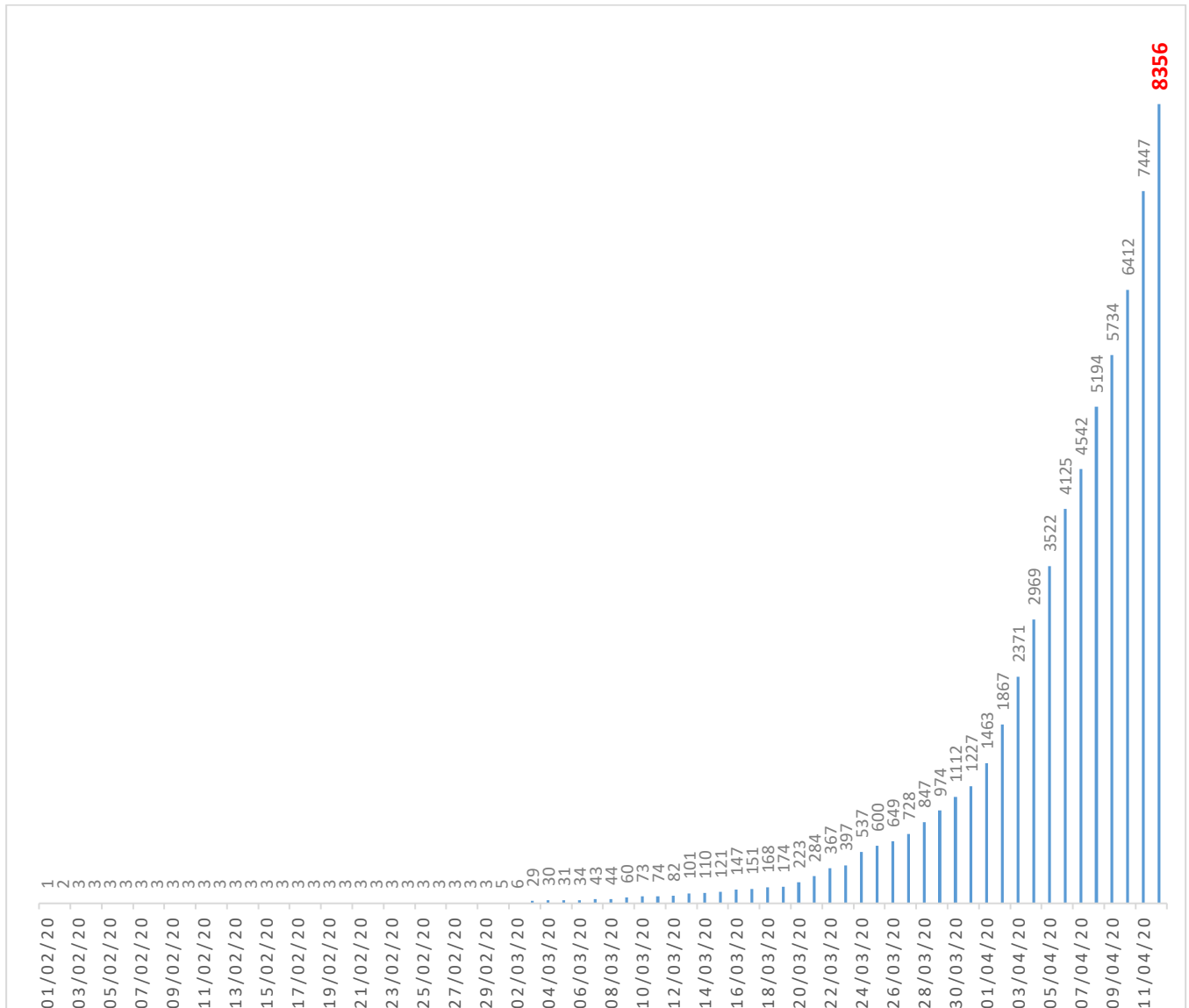


Table No. 2: Statewise Distribution of COVID-19 Cases & Deaths in India

Sr No	Name of States / Union Territory	Cases	Deaths	Mortality (%)
1	Punjab	151	11	7.28
2	Maharashtra	1761	127	7.21
3	Madhya Pradesh	532	36	6.77
4	Jharkhand	17	1	5.88
5	Gujarat	432	22	5.09
6	West Bengal	134	5	3.73
7	Assam	29	1	3.45
8	Himachal Pradesh	32	1	3.13
9	Karnataka	214	6	2.80
10	Odisha	50	1	2.00
11	Jammu & Kashmir	207	4	1.93
12	Telangana	504	9	1.79
13	Delhi	1069	19	1.78
14	Haryana	177	3	1.69
15	Bihar	63	1	1.59
16	Andhra Pradesh	381	6	1.57
17	Uttar Pradesh	452	5	1.11
18	Tamil Nadu	969	10	1.03
19	Kerala	364	2	0.55
20	Rajasthan	700	3	0.43
21	Manipur	2	0	0.00
22	Mizoram	1	0	0.00
23	Goa	7	0	0.00
24	Andaman and Nicobar	11	0	0.00
25	Arunachal Pradesh	1	0	0.00
26	Tripura	2	0	0.00
27	Chhattisgarh	18	0	0.00
28	Uttarakhand	35	0	0.00
29	Puducherry	7	0	0.00
30	Chandigarh	19	0	0.00
31	Ladakh	15	0	0.00
	TOTAL	8356	273	3.27

Figure No 2: Statewise Distribution of COVID-19 Cases in India

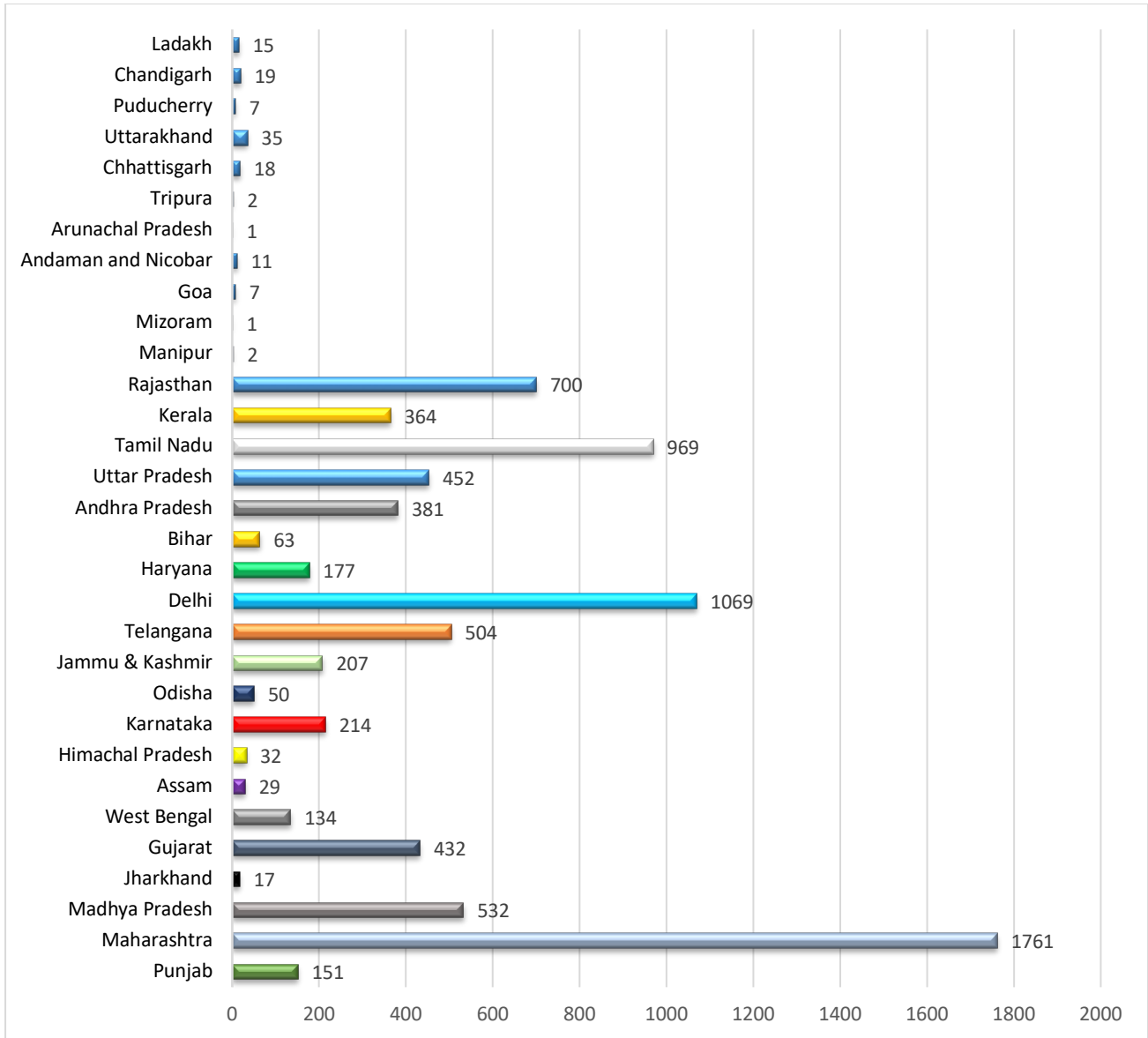


Figure No 3: Date wise trend of COVID-19 Cases in India (N=8356) & Maharashtra (N=1761)

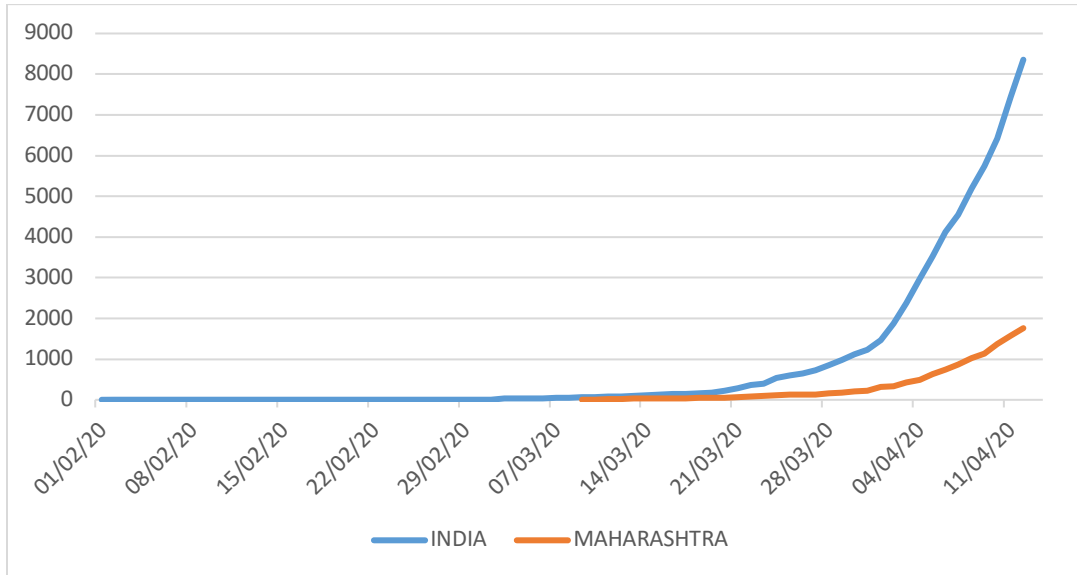


Figure No 4: Day wise trend of COVID-19 Cases in India (N=8356) & Maharashtra (N=1761)

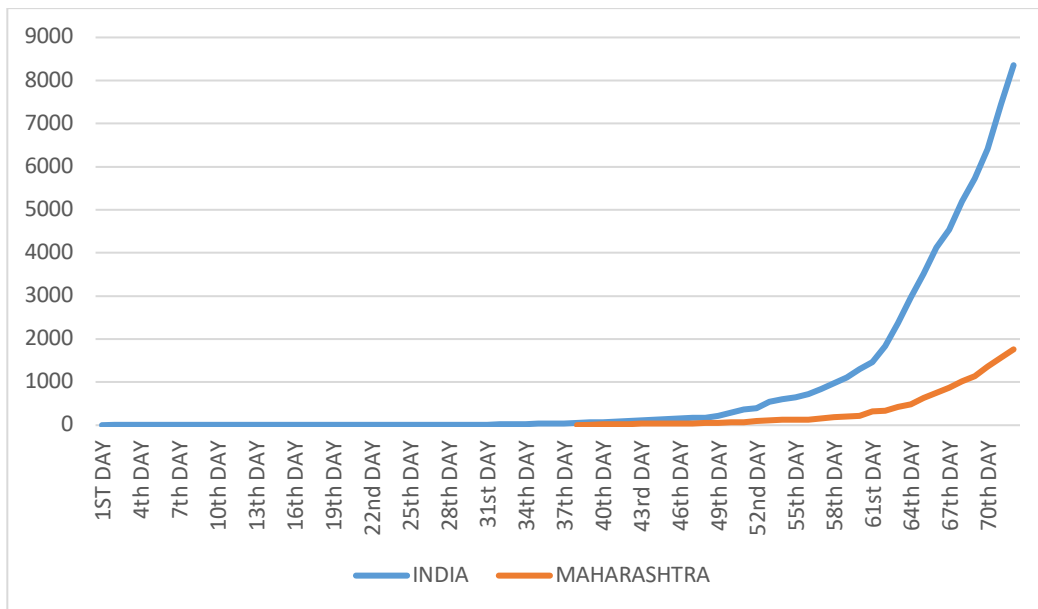


Figure No 5: Datewise Distribution of COVID-19 New Cases in India & Maharashtra

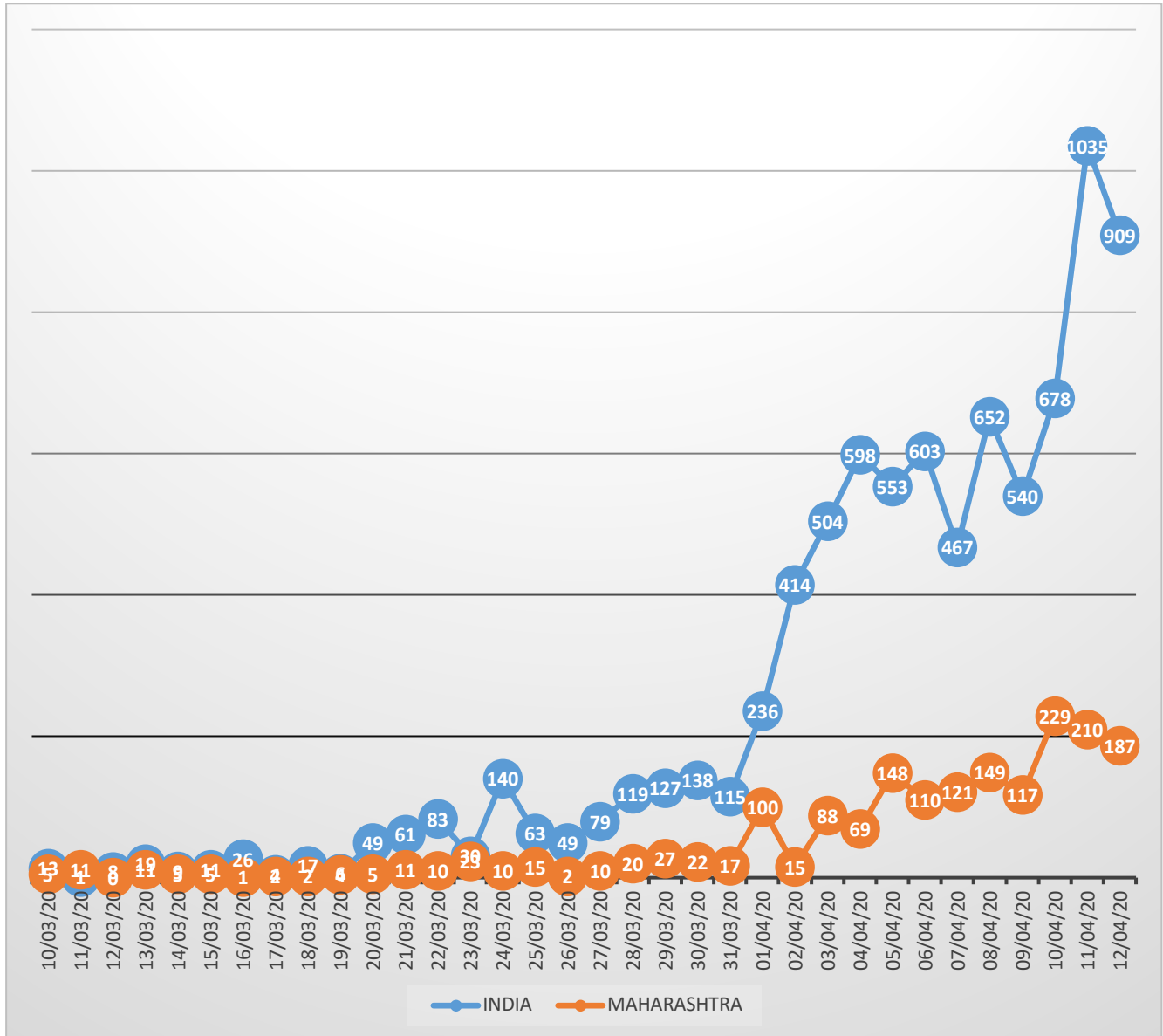
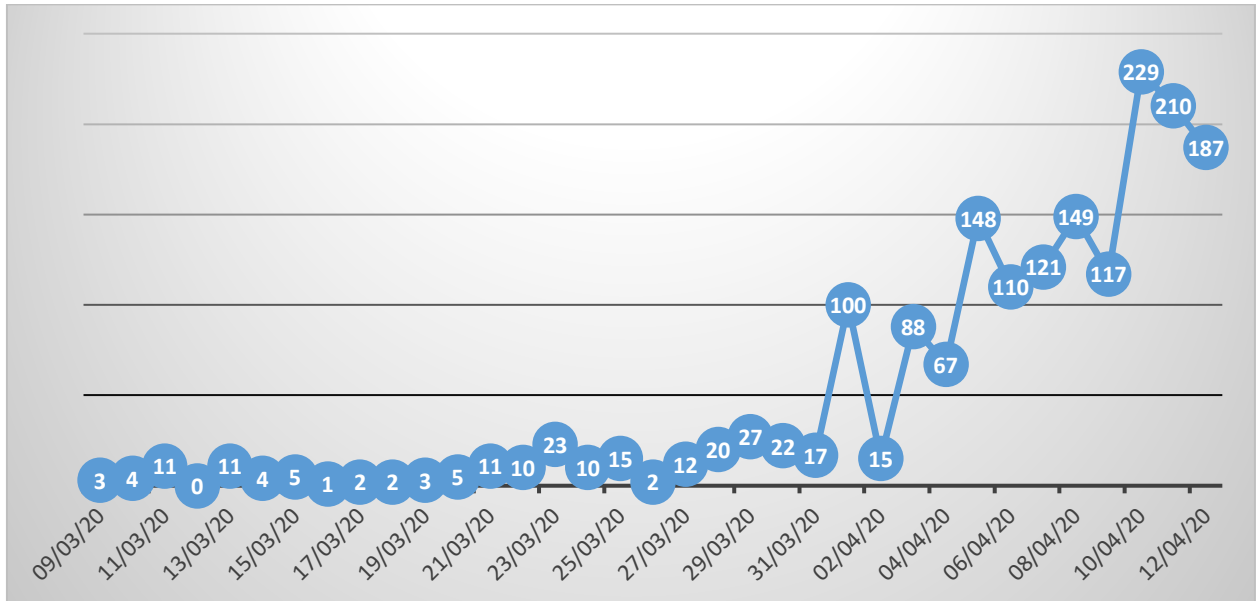


Figure No 6: Datewise Distribution of COVID-19 Cases in Maharashtra (N= 1761)

a) Datewise Distribution of New cases



b) Datewise Distribution of Cumulative cases

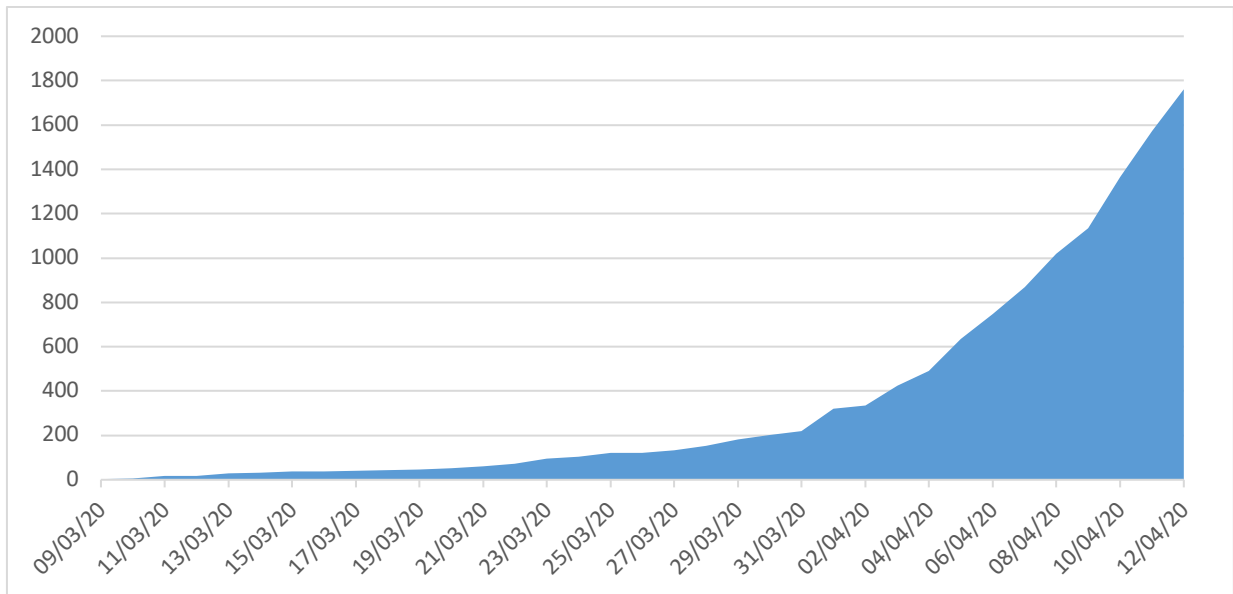
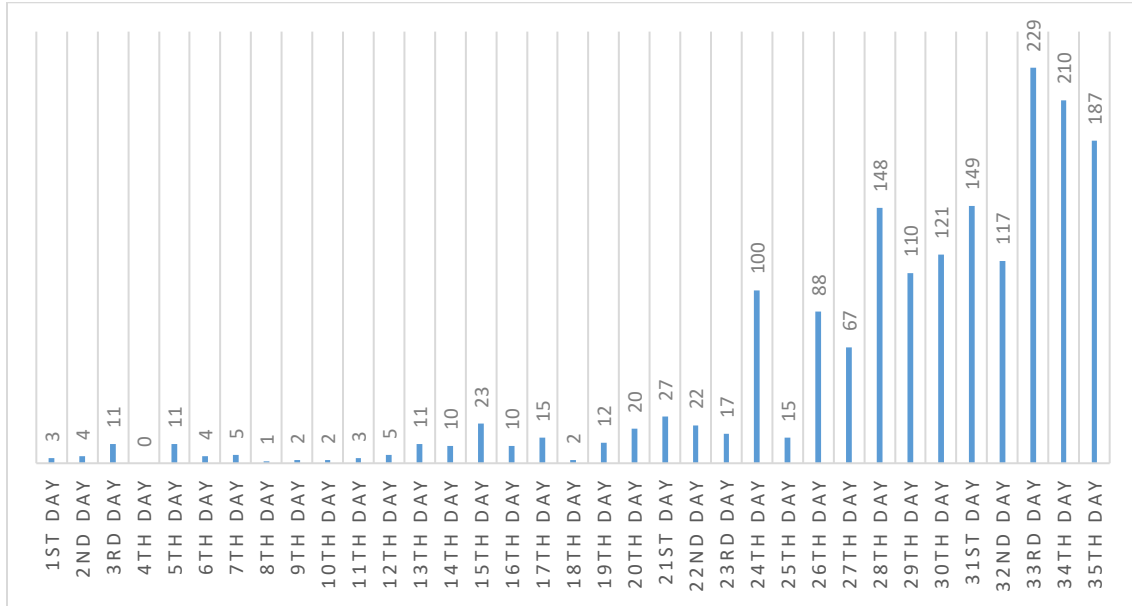


Figure No 7: Daywise Distribution of COVID-19 Cases in Maharashtra (N= 1761)

a) Daywise Distribution of New cases



b) Daywise Distribution of Cumulative cases

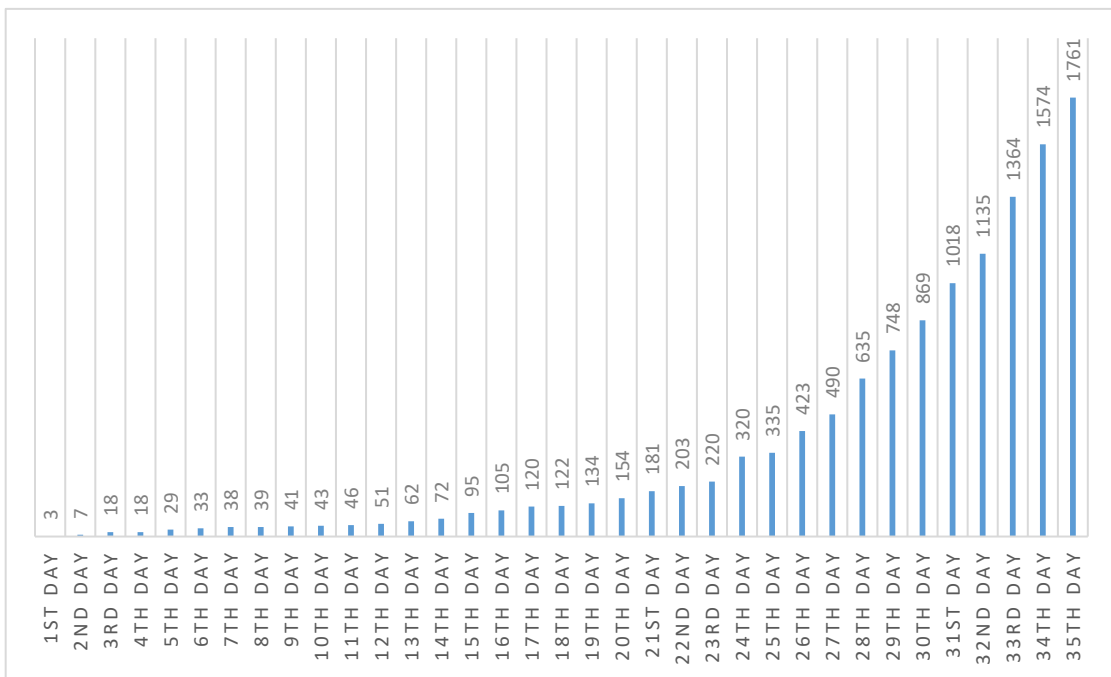


Figure No 8: Date wise Distribution of New Deaths due to COVID-19 in India and Maharashtra

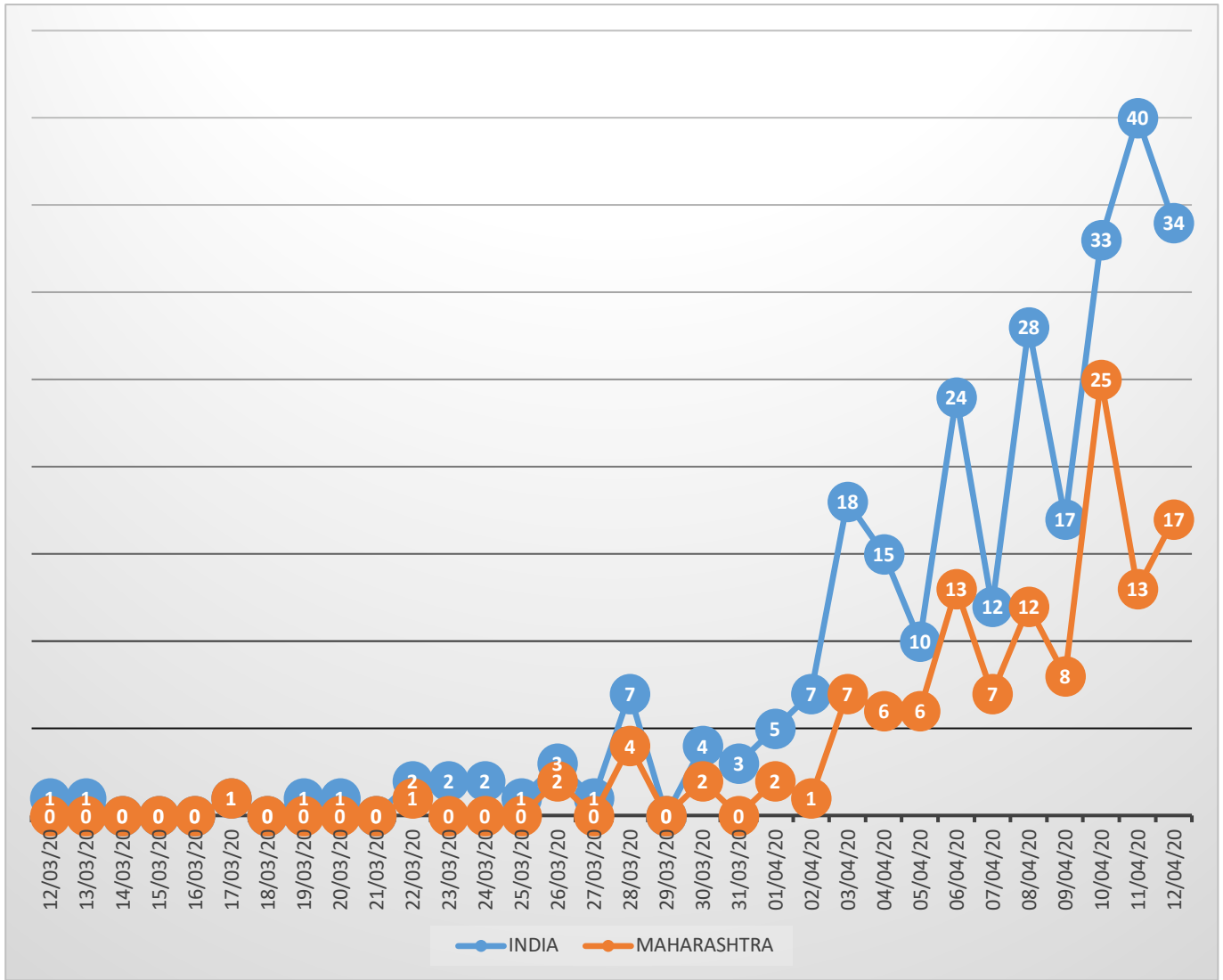


Table No 3: District/ Corporation wise Distribution of COVID-19 cases in Maharashtra**(N= 1761)**

S.NO	DISTRICT / CORPORATION	TOTAL CASES	NEW CASES	TOTAL DEATHS	NEW DEATHS
1	Mumbai	1146	138	76	12
2	Pune Municipal Corporation	228	9	27	2
3	Pimpri-Chinchwad Municipal Corporation	22	0	0	0
4	Pune	7	0	0	0
5	Thane Municipal Corporations	29	1	3	0
6	Kalyan-Dombivali Municipal Corporation	35	1	2	0
7	Navi Mumbai Municipal Corporation	36	4	2	0
8	Mira-Bhayandar Municipal Corporation	36	15	1	0
9	Vasai-Virar Municipal Corporation	14	2	3	0
10	Panvel Municipal Corporation	7	1	1	0
11	Thane	6	3	0	0
12	Ulhasnagar Municipal Corporation	1	0	0	0
13	Palghar	4	1	1	0
14	Ratnagiri	5	0	1	0
15	Yavatmal	4	0	0	0
16	Satara	6	0	2	1
17	Sangli	26	0	0	0
18	Nagpur Municipal Corporation	25	0	1	0
19	Ahmednagar Municipal Corporation	16	0	0	0
20	Ahmednagar	10	1	0	0
21	Buldhana	13	0	1	0
22	Aurangabad Municipal Corporation	16	0	1	0
23	Aurangabad	3	2	0	0
24	Latur Municipal Corporation	8	0	0	0
25	Osmanabad	4	0	0	0
26	Kolhapur	1	1	0	0
27	Kolhapur Municipal Corporation	5	0	0	0
28	Nashik Municipal Corporation	1	0	0	0
29	Nashik	2	1	0	0
30	Jalgaon Municipal Corporation	1	0	1	0
31	Jalgaon	1	0	0	0
32	Jalna	1	0	0	0
33	Hingoli	1	0	0	0
34	Washim	1	0	0	0
35	Gondia	1	0	0	0
36	Amaravati Municipal Corporation	4	0	1	0
37	Malegaon Municipal Corporation	11	6	2	1
38	Akola Municipal Corporation	12	0	0	0
39	Beed	1	0	0	0
40	Dhule	1	1	1	1
41	Sindhudurg	1	0	0	0
42	Other States	9	0	0	0
	TOTAL	1761	187	127	17

Figure No 9: District/ Corporation wise Distribution of COVID-19 Cases in Maharashtra (N= 1761)

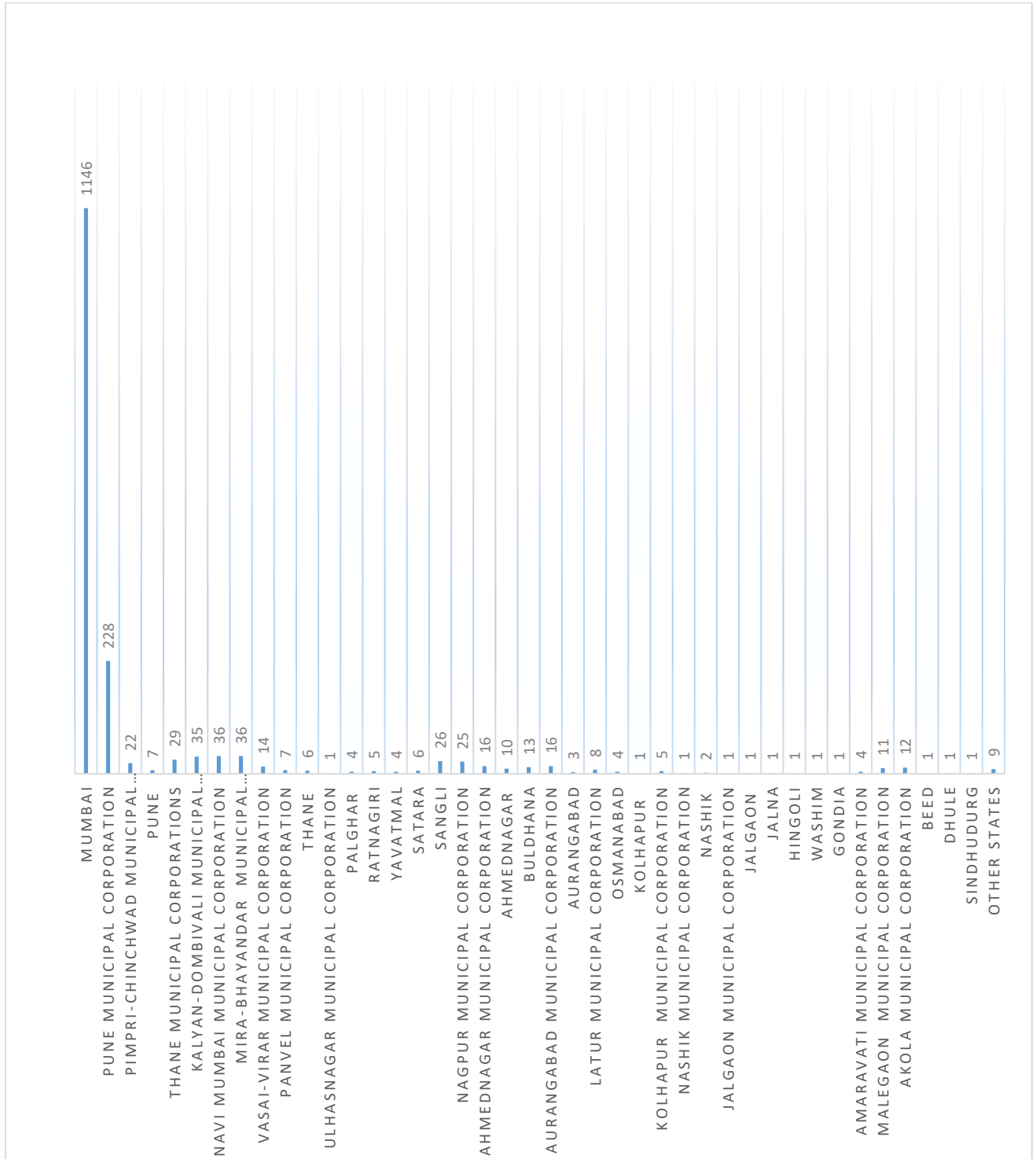
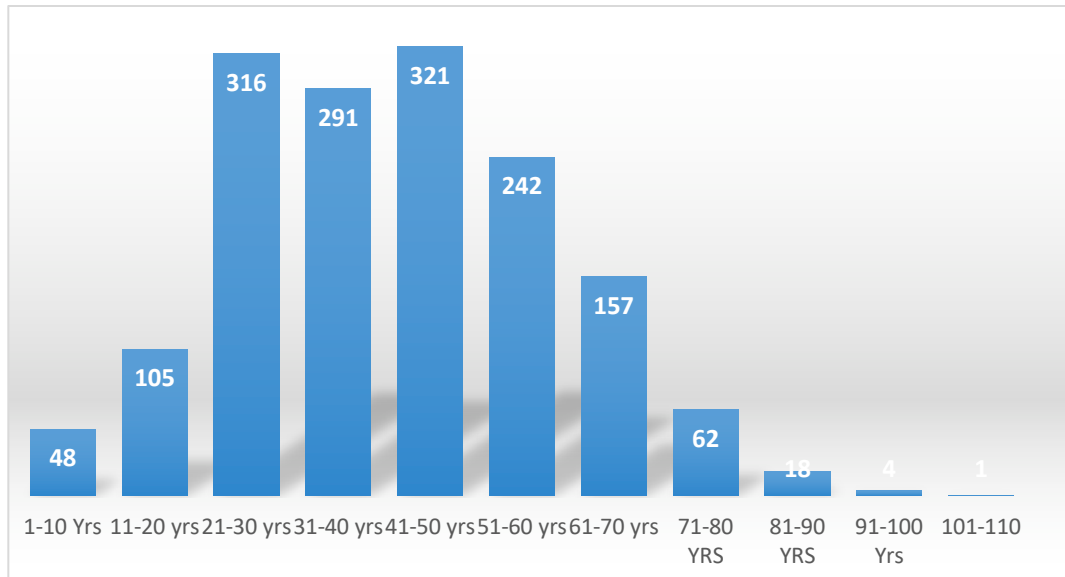
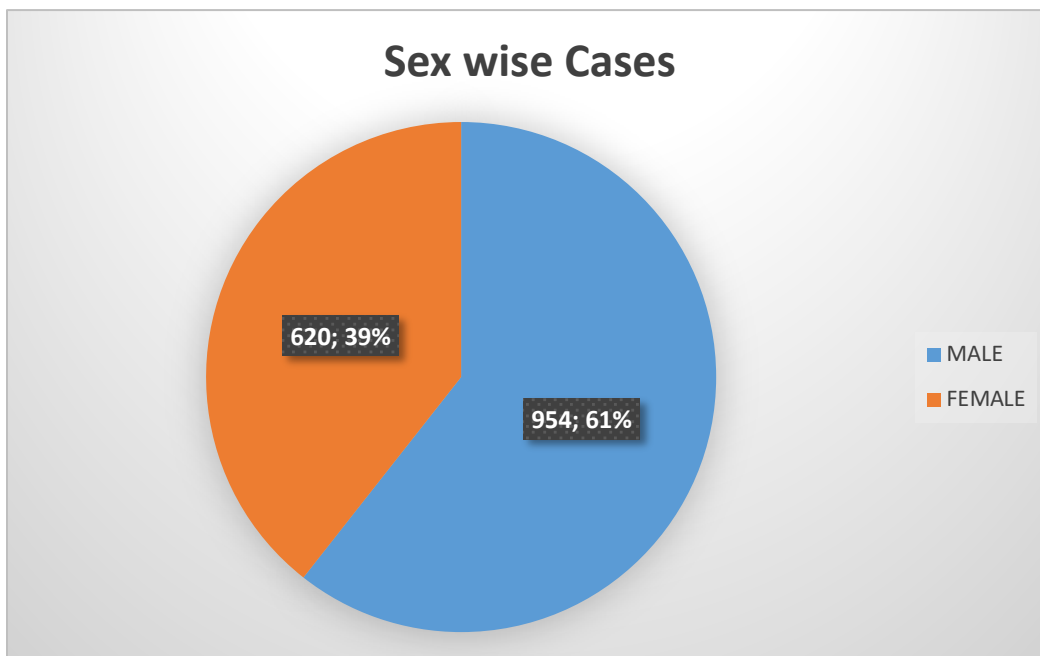


Figure No 10: Age wise distribution of COVID-19 Cases in Maharashtra (N = 1565)*



*Details are available for 1565 cases

Figure No 11: Sex wise distribution of COVID-19 Cases in Maharashtra (N=1574) *



*Details are available for 1574 cases

Figure No 12: Sexwise distribution of COVID-19 Deaths in Maharashtra (N= 127)

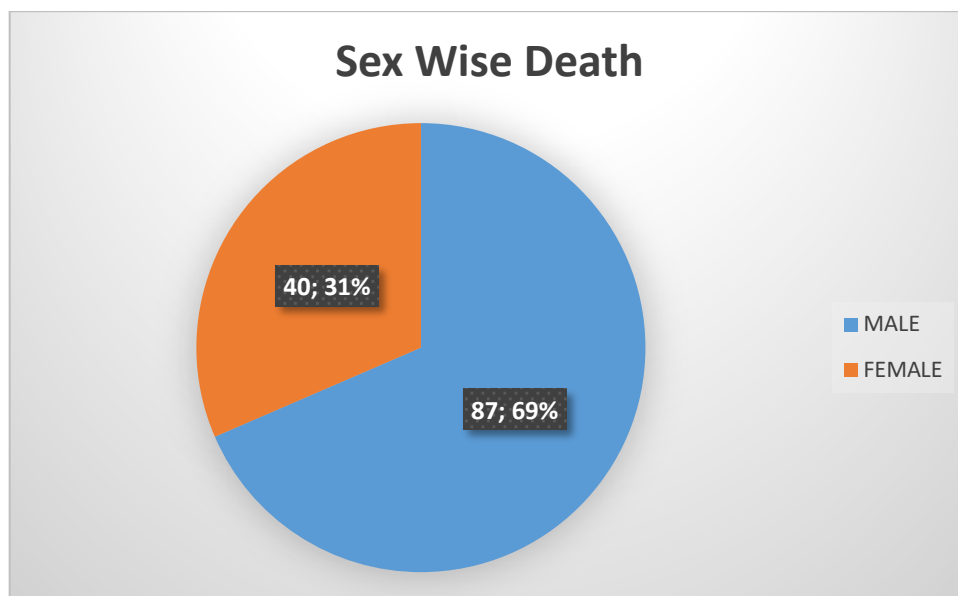
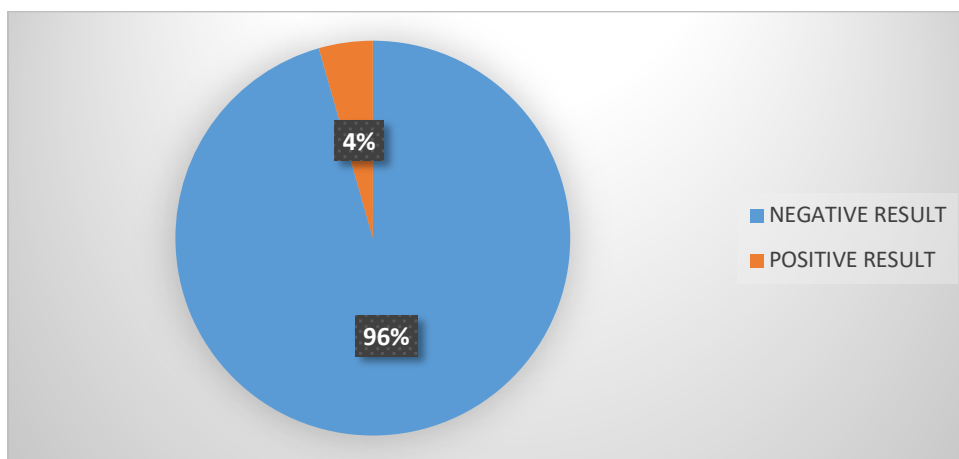


Figure No 13: Total samples tested for COVID-19 in Maharashtra (N=35668)*



*Details are available for 35668 tested samples

Table No 4: COVID-19 Testing status in Maharashtra.(N=35668)*

STATUS	GOVERNMENT LABS	PRIVATE LABS	TOTAL
SAMPLES TESTED	21115	14553	35668
NEGATIVE	19950 (94.48)	14144 (97.19)	34094 (95.59)
POSITIVE	1165 (5.52)	409 (2.81)	1574 (4.41)

*Details are available for 35668 tested samples

Table No 6: Doubling time of COVID-19 cases comparison with other countries

No. of cases	CHINA	KOREA	INDIA	USA	FRANCE	ITALY	JAPAN	SPAIN	IRAN
100	1ST DAY	31ST DAY	42ND DAY	44TH DAY	41ST DAY	25TH DAY	33RD DAY	32RD DAY	8TH DAY
1000	5TH DAYS	37TH DAY	58TH DAY	53RD DAY	49TH DAY	31ST DAY	63RD DAY	39TH DAY	13TH DAY
2000	6TH DAY	39TH DAY	63RD DAY	56TH DAY	52ND DAY	33RD DAY	74TH DAY	41ND DAY	14TH DAY
4000	8TH DAY	42ND DAY	66TH DAY	60ST DAY	55TH DAY	37TH DAY	79TH DAY	43TH DAY	17TH DAY
8000	11TH DAY	54TH DAY	72TH DAY	61ST DAY	60TH DAY	40TH DAY		46TH DAY	21ST DAY
16000	14TH DAY			62nd DAY	64TH DAY	44TH DAY		50TH DAY	28TH DAY
32000	19TH DAY			64TH DAY	68TH DAY	50TH DAY		53RD DAY	38TH DAY
64000	28TH DAY			67TH DAY	73RD DAY	55TH DAY		57TH DAY	50TH DAY
128000				71ST DAY		67TH DAY		65TH DAY	
256000				73RDDAY					
512000									

Reference:

Source: Report is prepared on the basis of information published by World Health Organization Daily Situation Report, Ministry of Health Family Welfare *mohfw.gov.in* and Daily Press Note released by Public Health Department.
Data Collection timing: 9:00 AM – 9:00 AM